

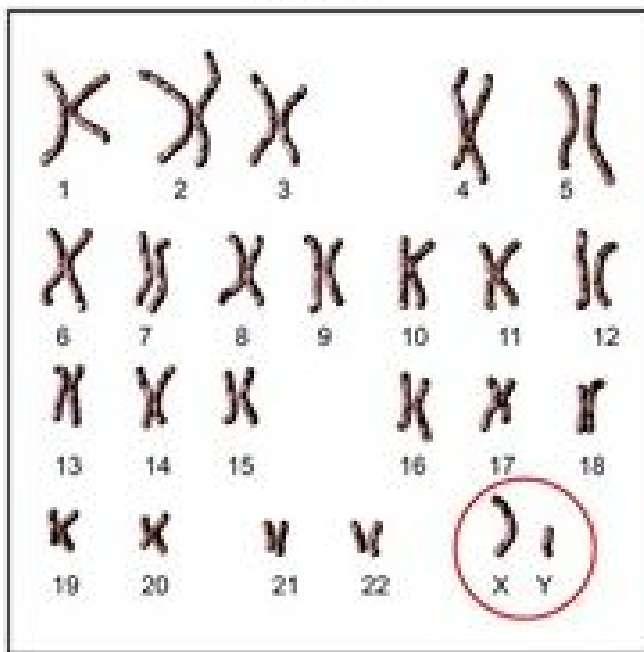
Chromosomes carry the genes that determine the traits of an organism. Most chromosomes come in pairs. One pair comes from the mother and one from the father. For example, the trait for wet or dry ear wax sits on chromosome 16.

Look at the following karyotypes.

1. What is the difference between the two?
2. Some recessive traits and diseases are much more common in males. Explain how this can be true. Think about the differences between the male and female chromosomes.

## Human karyotype

Male



Female

