

# Homology & Analogy

# Which two do you think are most closely related? Why?



Shark

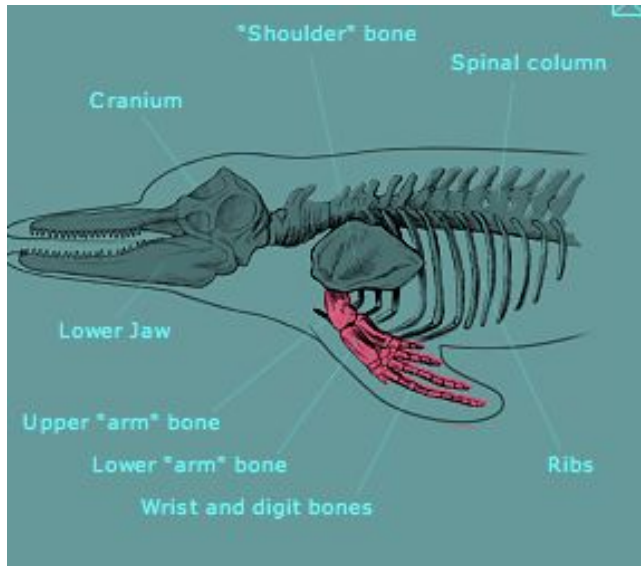


Wolf

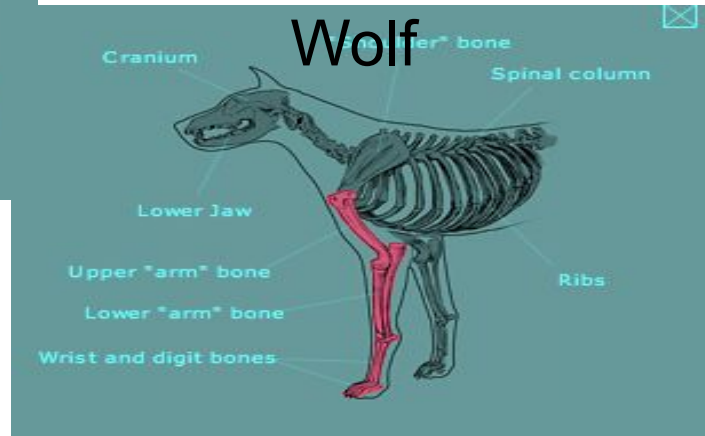


Dolphin

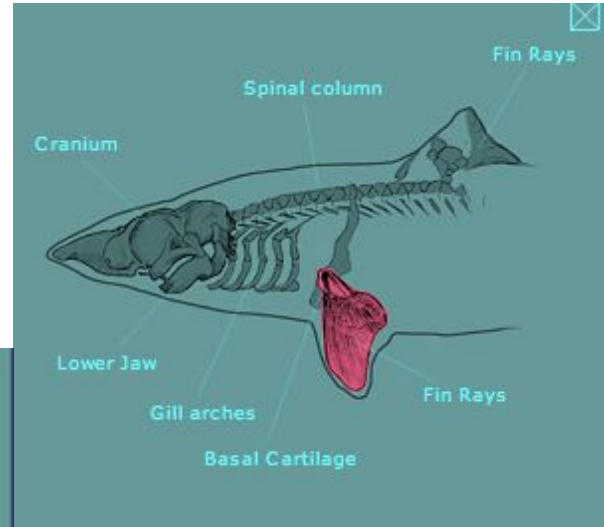
# Evidence #1 - Limbs



Dolphin

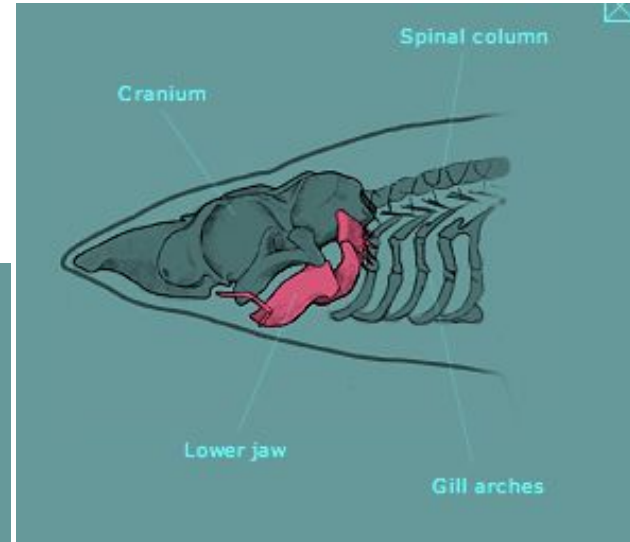
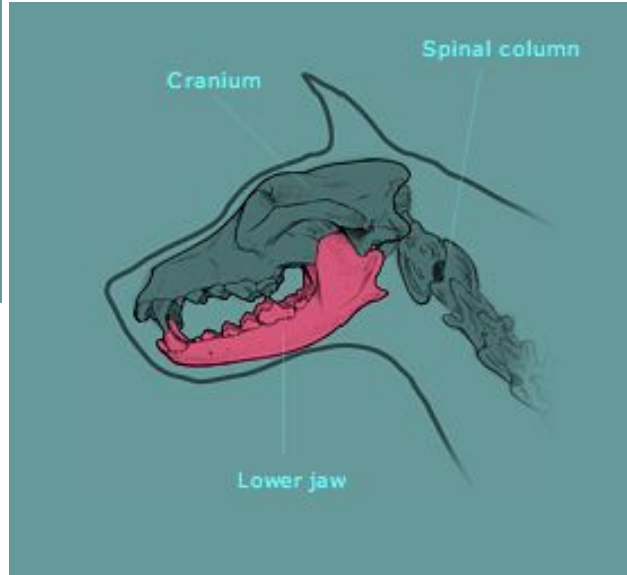
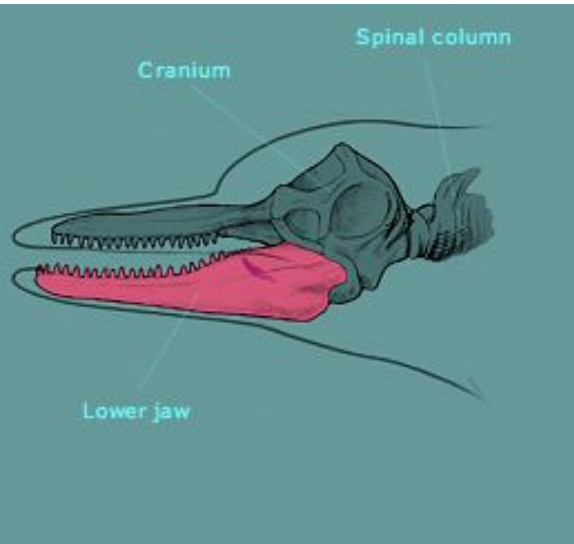


Wolf

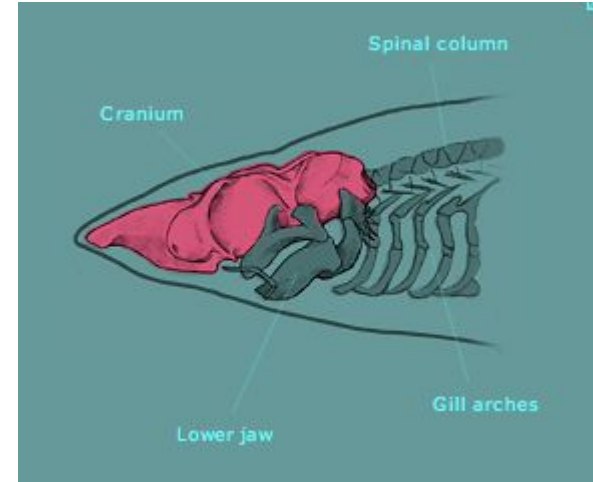
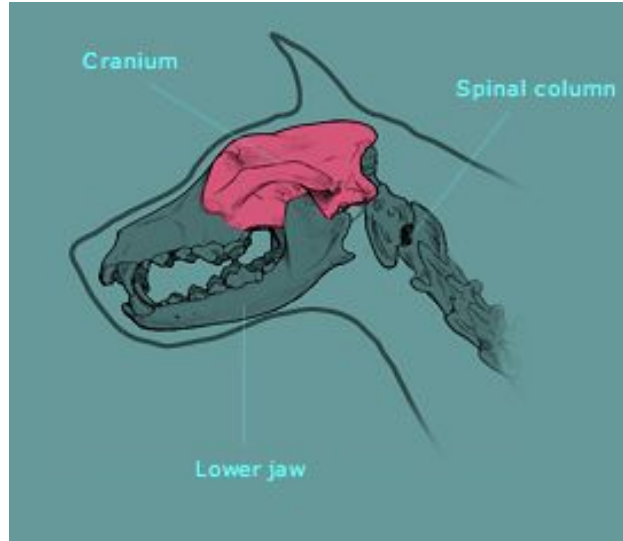
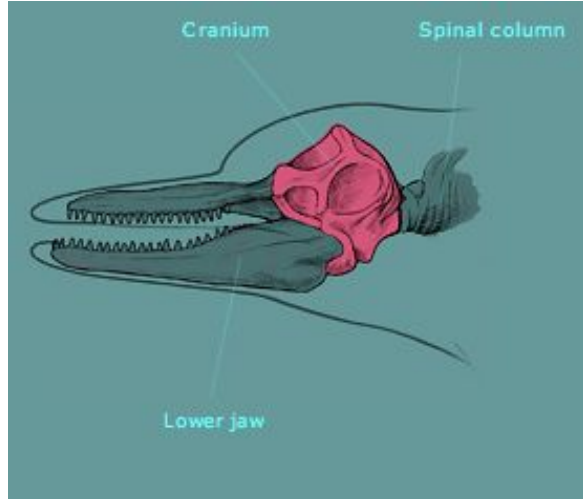


Shark

# Evidence #2 - Jaw Bone



# Evidence #3 - Cranium



# Assignment - Classification

## 1. Homology and Analogy

- a. Work through the front page
- b. Use the evidence from the slides, not your own knowledge.
- c. #5 and #6 are your ideas and may or may not be correct. Give your thoughts.

# Homology vs Analogy

1. Which animals share homologous structures?



2. Which animal has analogous structures?



# **Assignment - Classification**

## **1. Homology and Analogy**

- a. 10-15 minutes to finish getting evidence**
- b. If you finish with all questions and want to start on the HP, let me know.**



# Group Work

1. Each group of 2-3 will get copies of the evidence.
2. Look at the evidence and decide which organisms are most closely related.
3. Complete the worksheet and **turn in!**



Echidna



Grizzly bear



Raccoon



Opossum

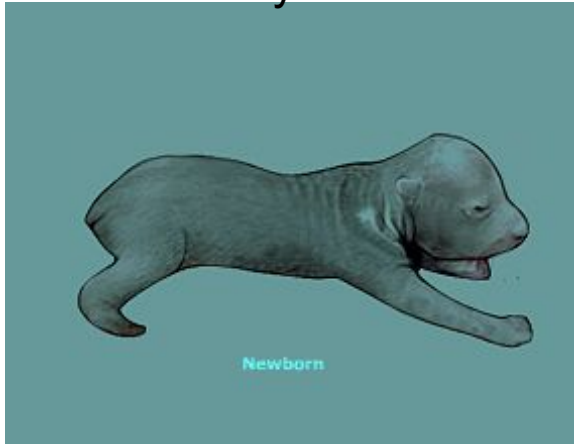
Echidna



Raccoon



Grizzly Bear

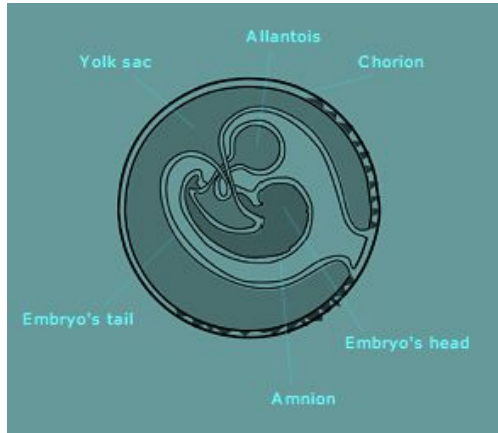


Opossum

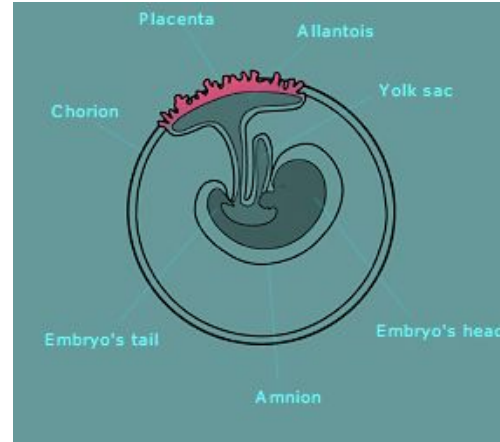


Newborn  
comparison

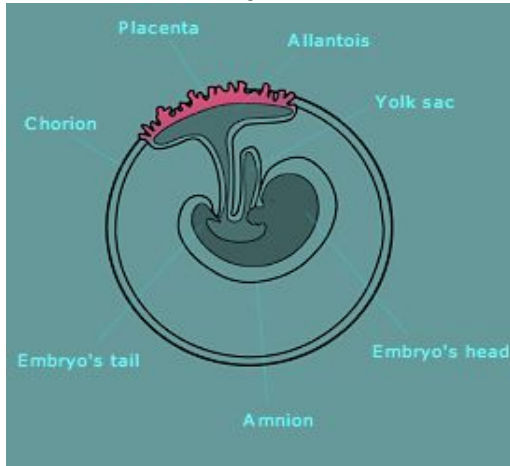
## Echidna



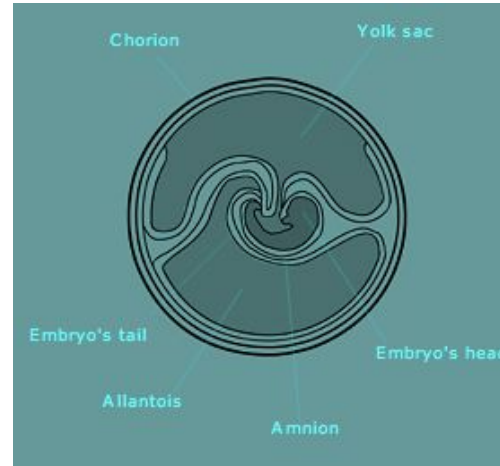
## Raccoon



## Grizzly Bear

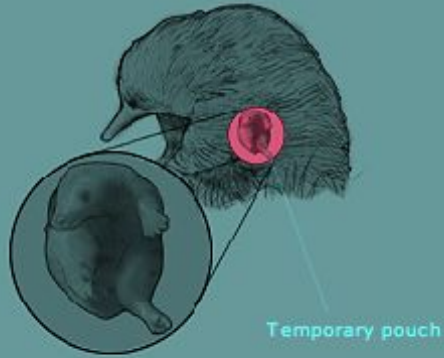


## Opossum



# Embryo Development

Mother with young



Mother with young



Mother with young



Mother with young



# Mother with Young

## Fill in the cladogram

